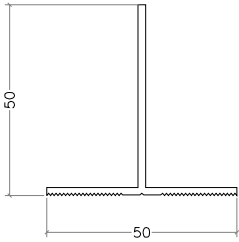
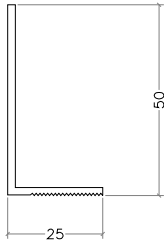
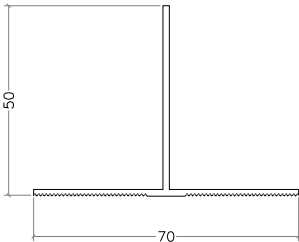
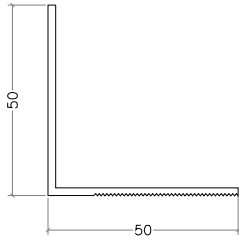
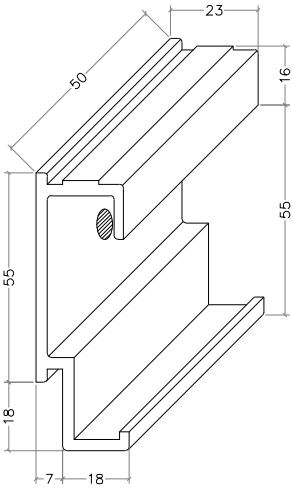
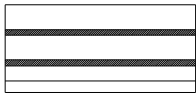
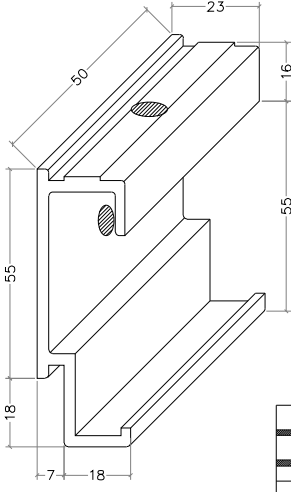
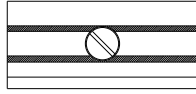
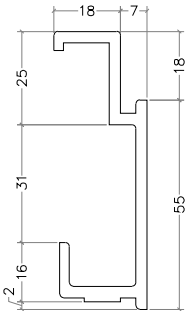




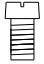
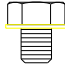
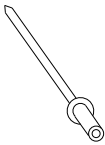
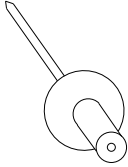
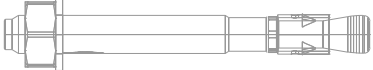
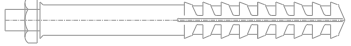




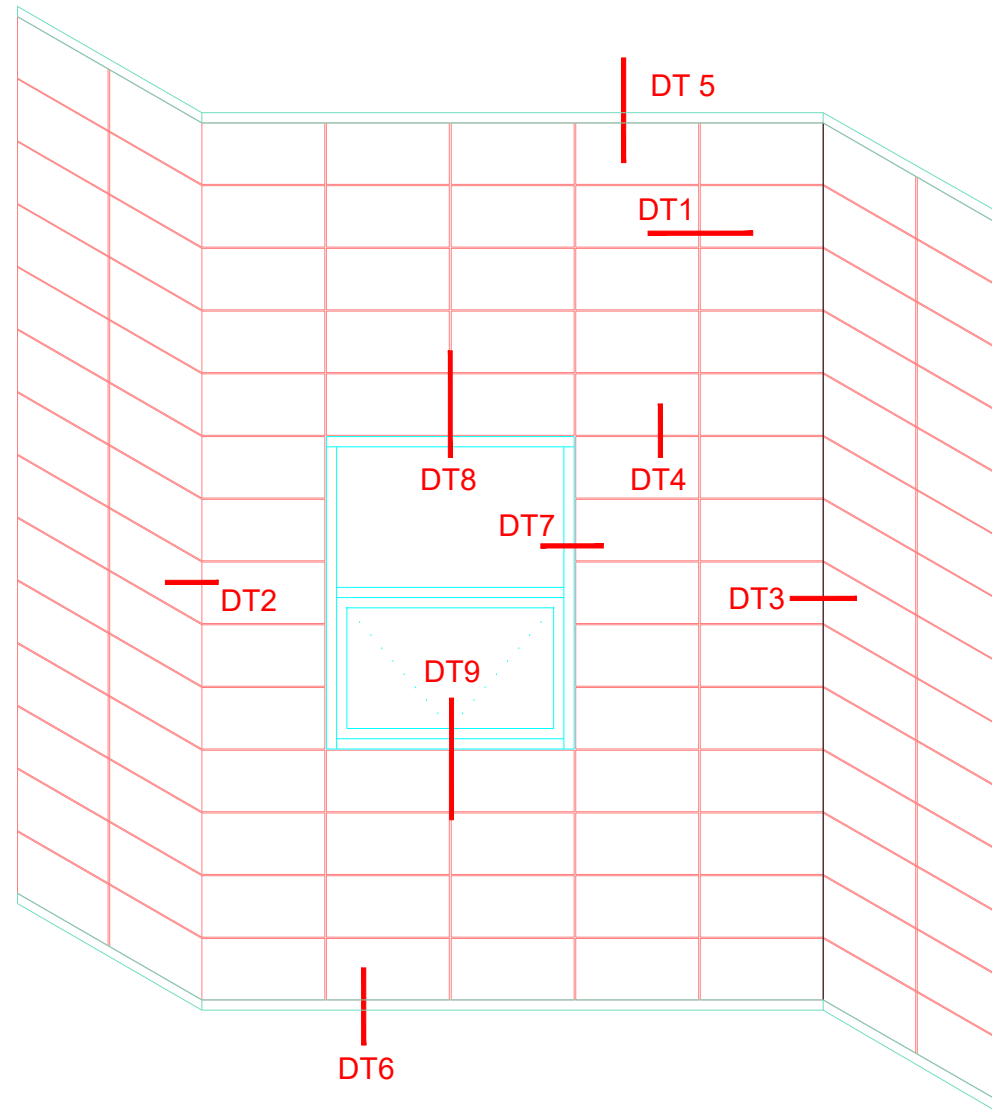
code	profile	profile features	code	profile	profile features
TP01	 <p>T Profile (50x50)</p>	colour : ral	LP01	 <p>L Profile (25x50)</p>	colour : ral
TP02	 <p>T Profile (70x50)</p>	colour : ral	LP02	 <p>L Profile (50x50)</p>	colour : ral
KP01	 <p>Bottom Clip</p> <p>Top View</p> 	colour : Eloxal	KP02	 <p>Top Clip</p> <p>Top View</p> 	colour : Eloxal
RP01	 <p>Rail Profile</p>	colour : Eloxal	<p>3,9x19 YHB (M.U.V)    3,9x19 YSB (M.U.V)    4,8x16 YSB (M.U.V)    AKB 5,5x25 (M.U.V)</p>     <p>Adj. Screw    M8x10 Bolt</p>  		

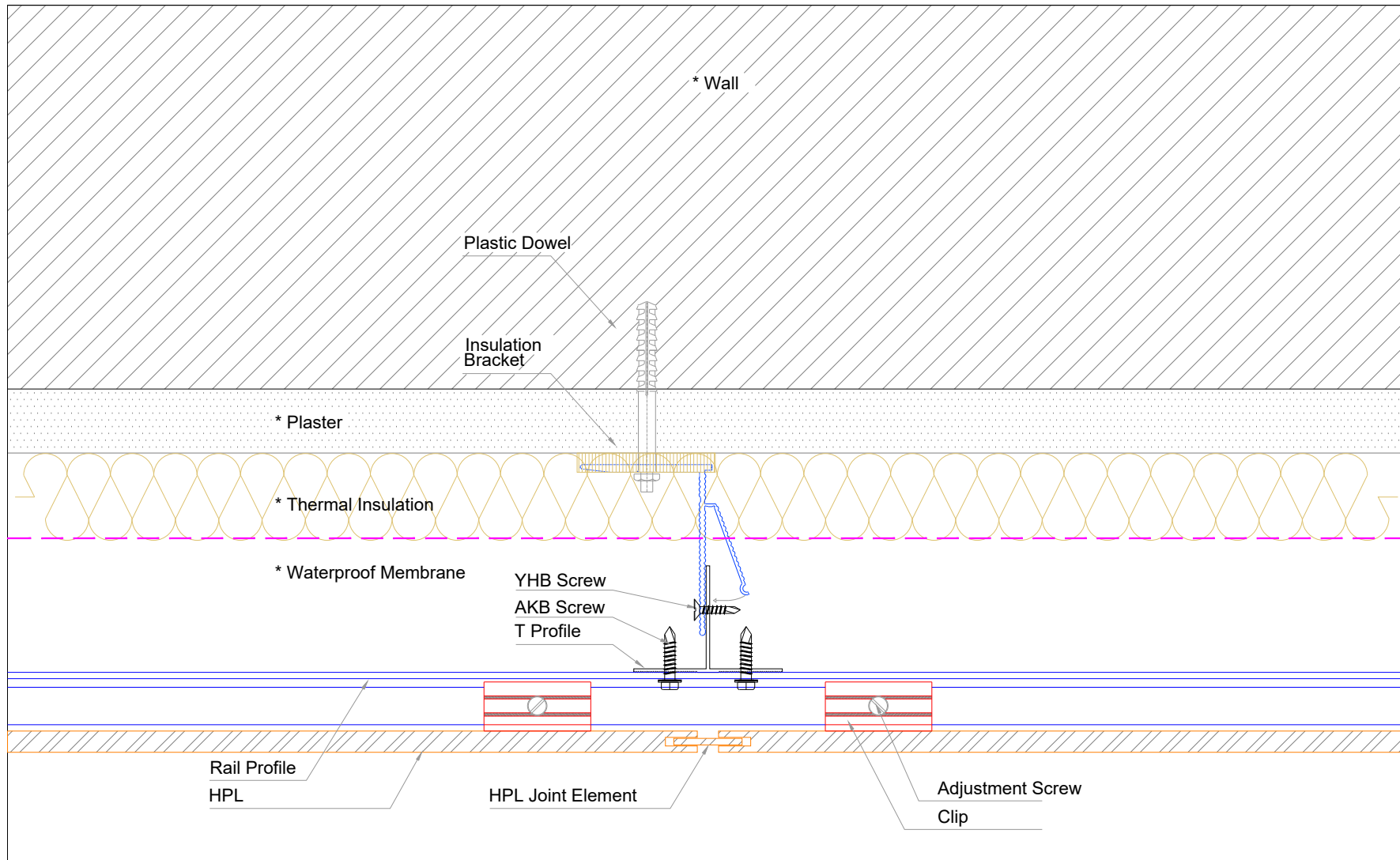


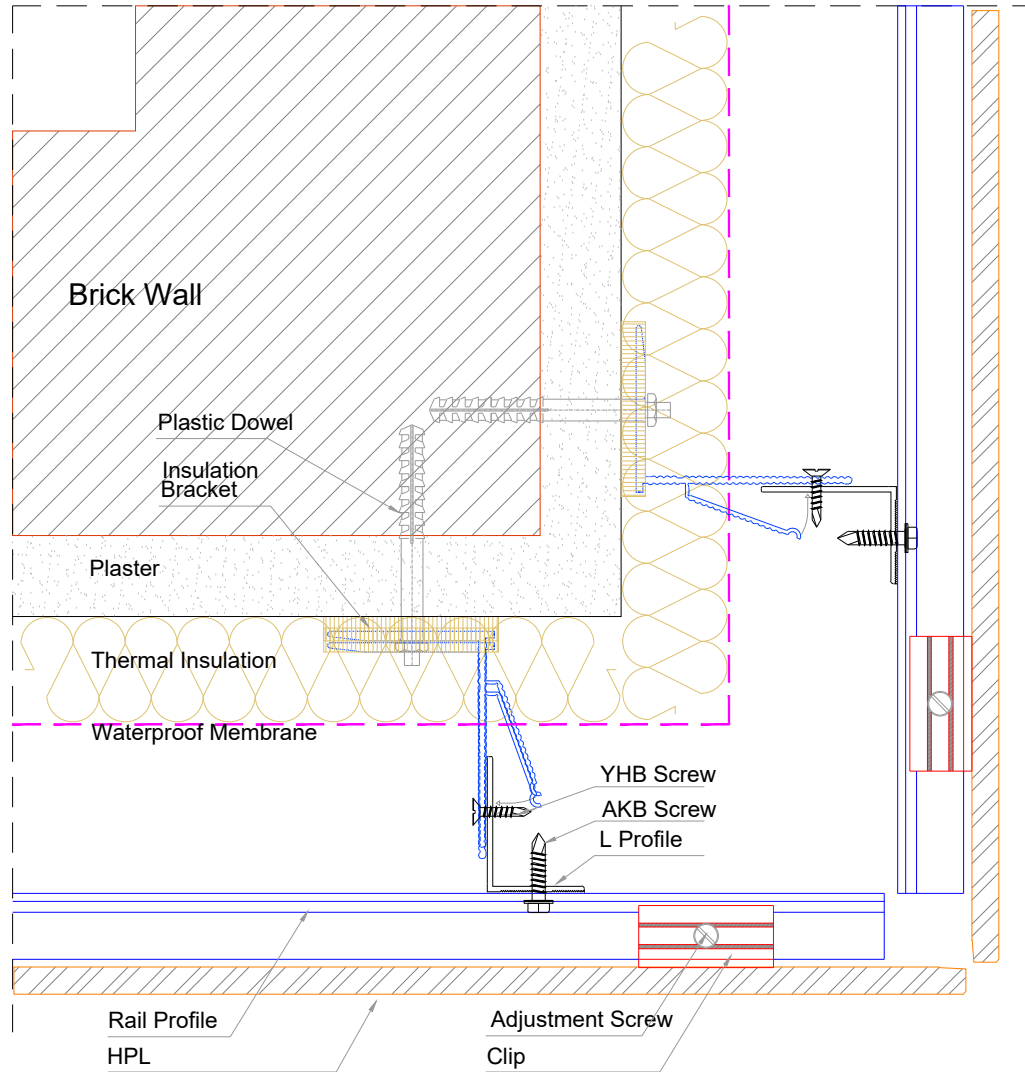
code	profile	profile features	code	profile	profile features
	 4x10 Rivet	 4,8x25 Rivet (Supply by requested Ral code.)		 Steel Dowel	
				 Plastic Dowel	

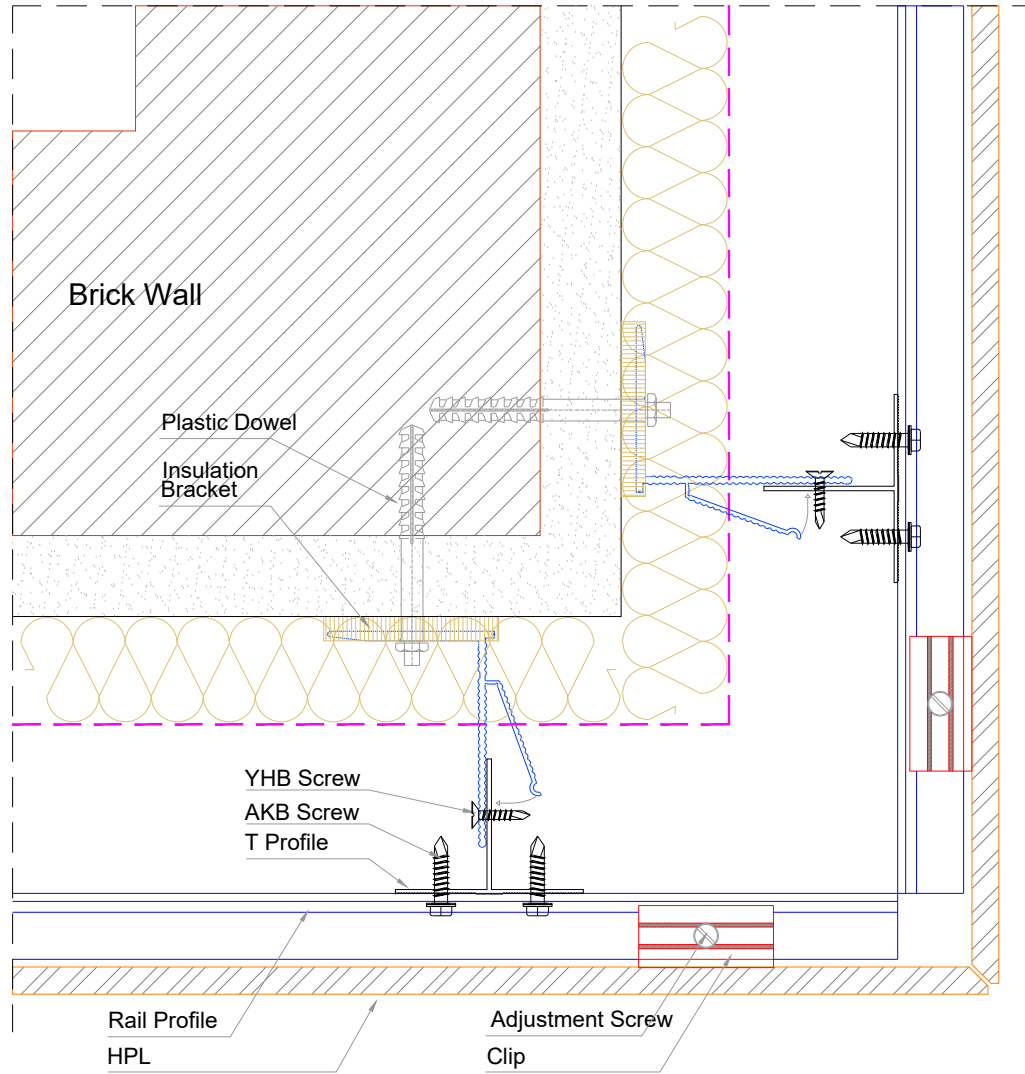


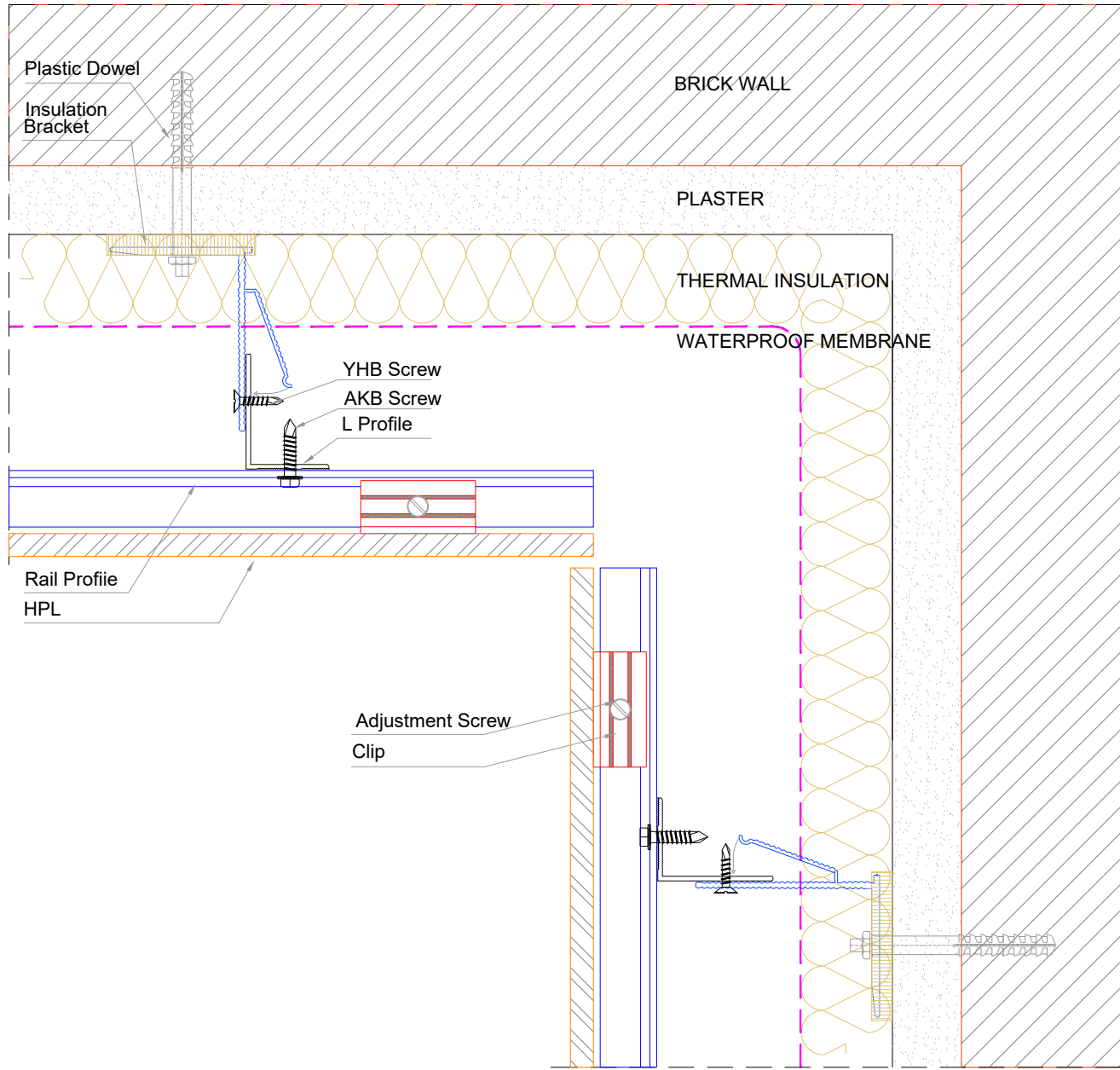
1. IZOFIX SUPPORT BRACKET
2. T PROFILE
3. IZOFIX MAIN BRACKET
4. RAIL PROFILE
5. CLIP
6. PLASTER
7. THERMAL INSULATION
8. WATERPROOF MEMBRANE
9. HPL
10. PLASTIC DOWEL
11. STEEL DOWEL
12. BRICK BLOCK
13. CONCRETE BEAM





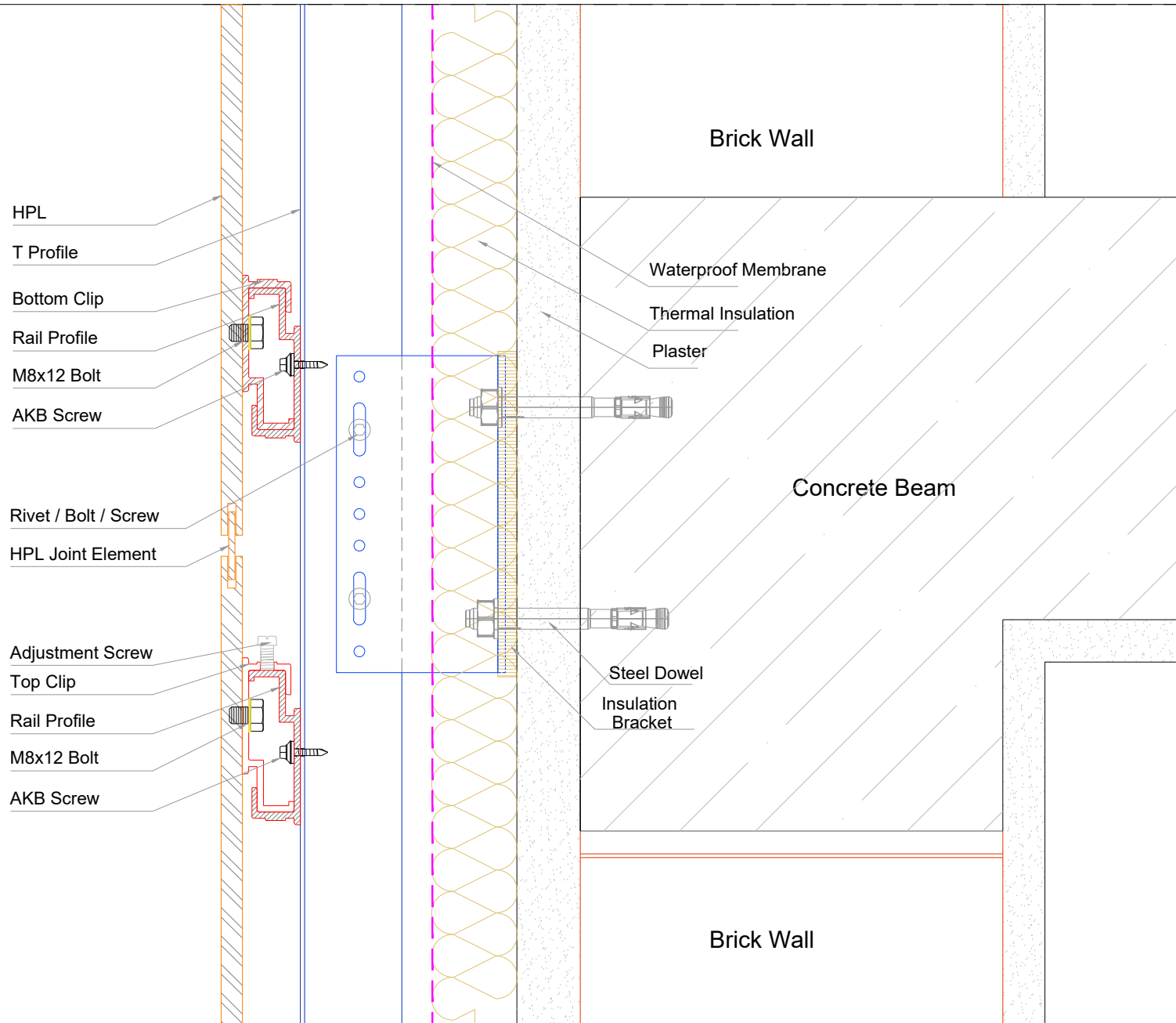


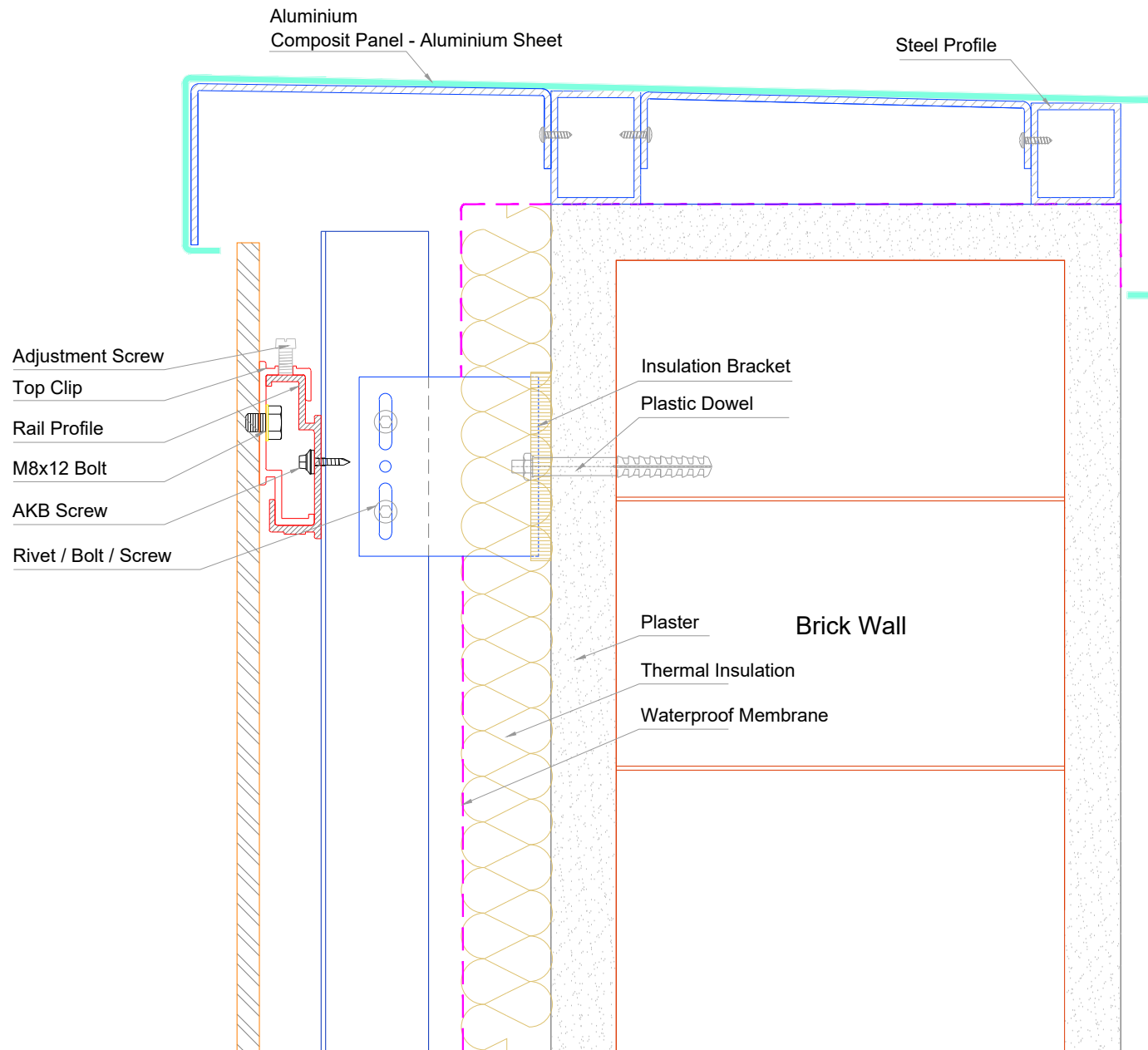


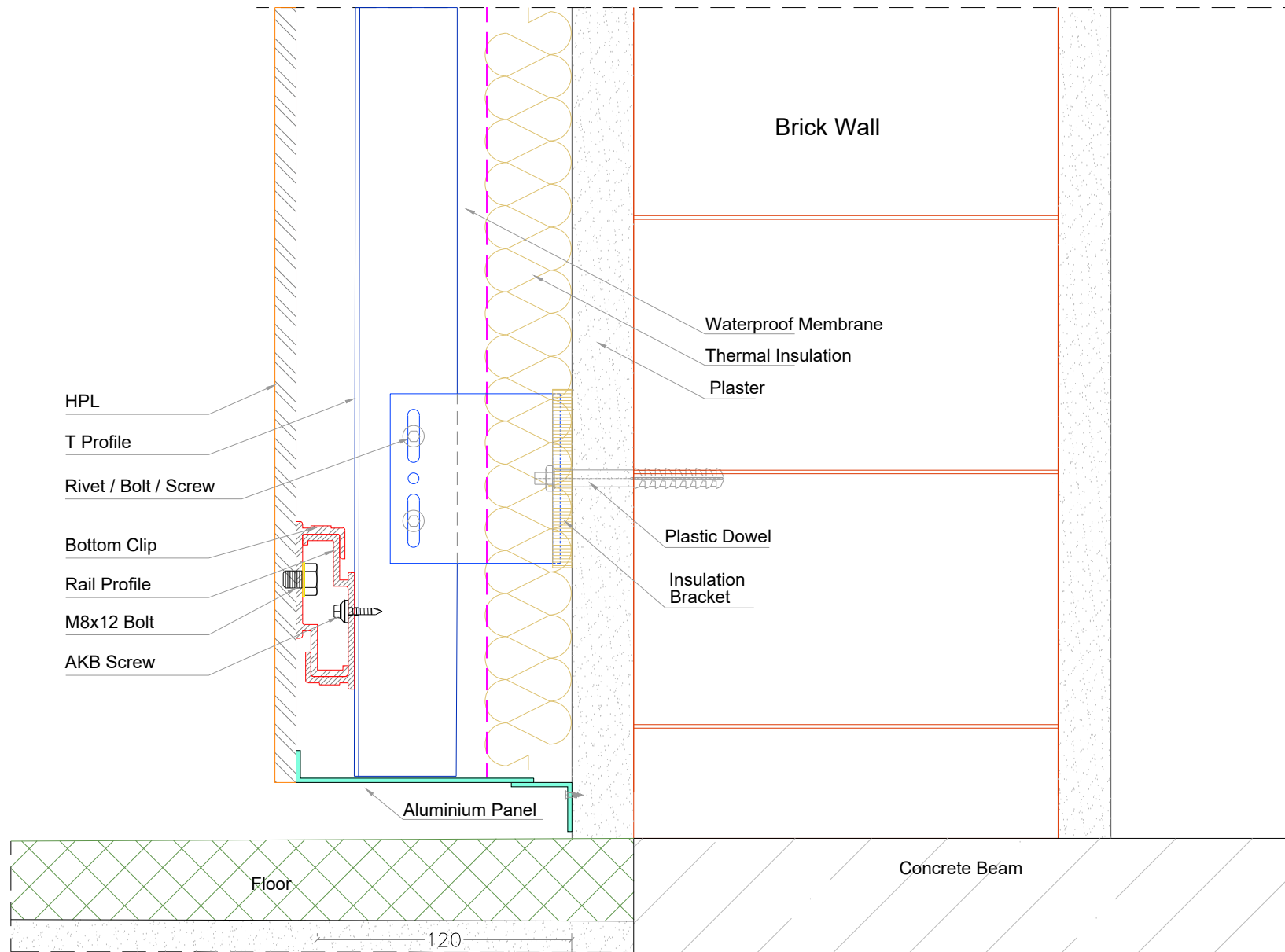


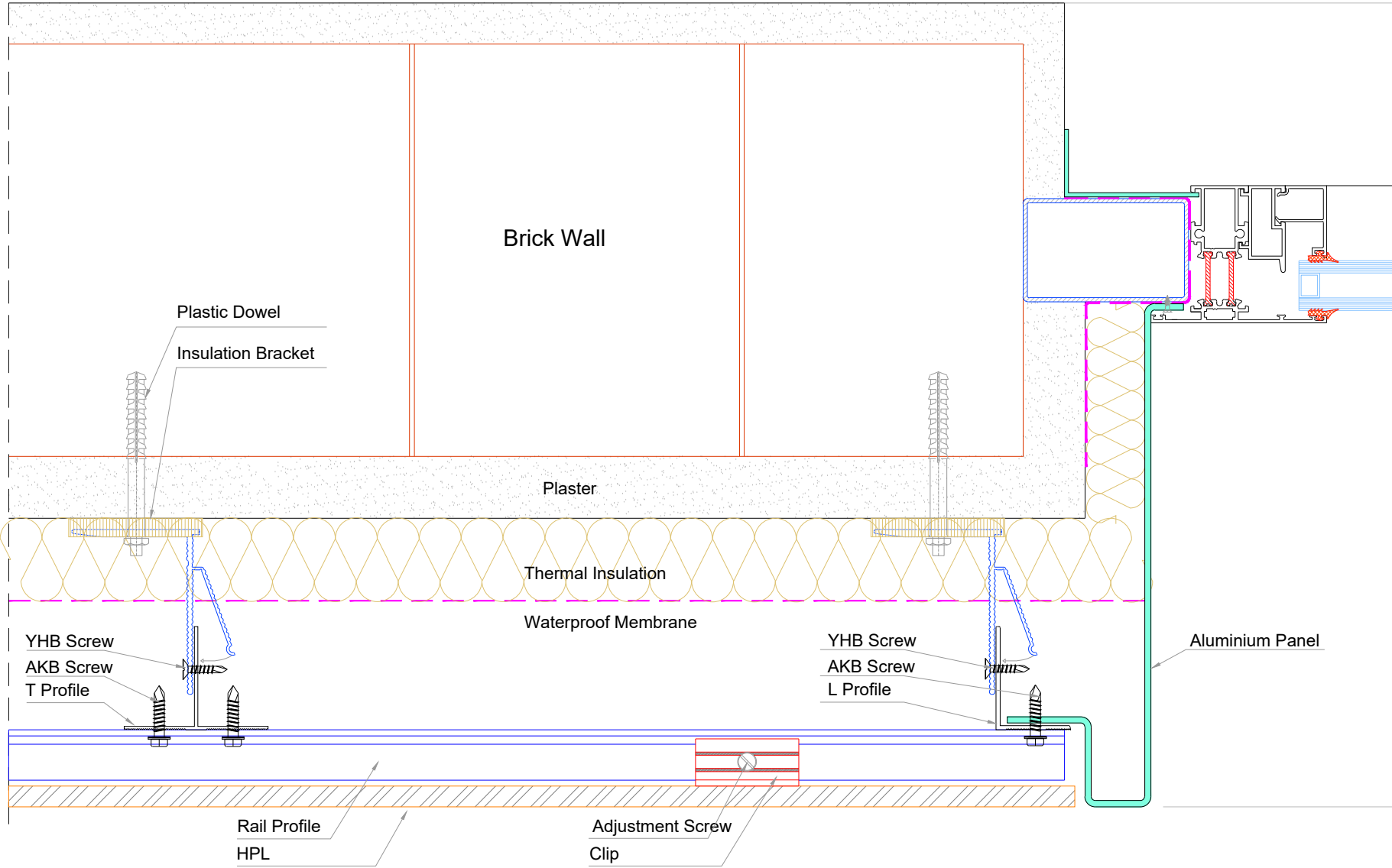
DETAIL 3



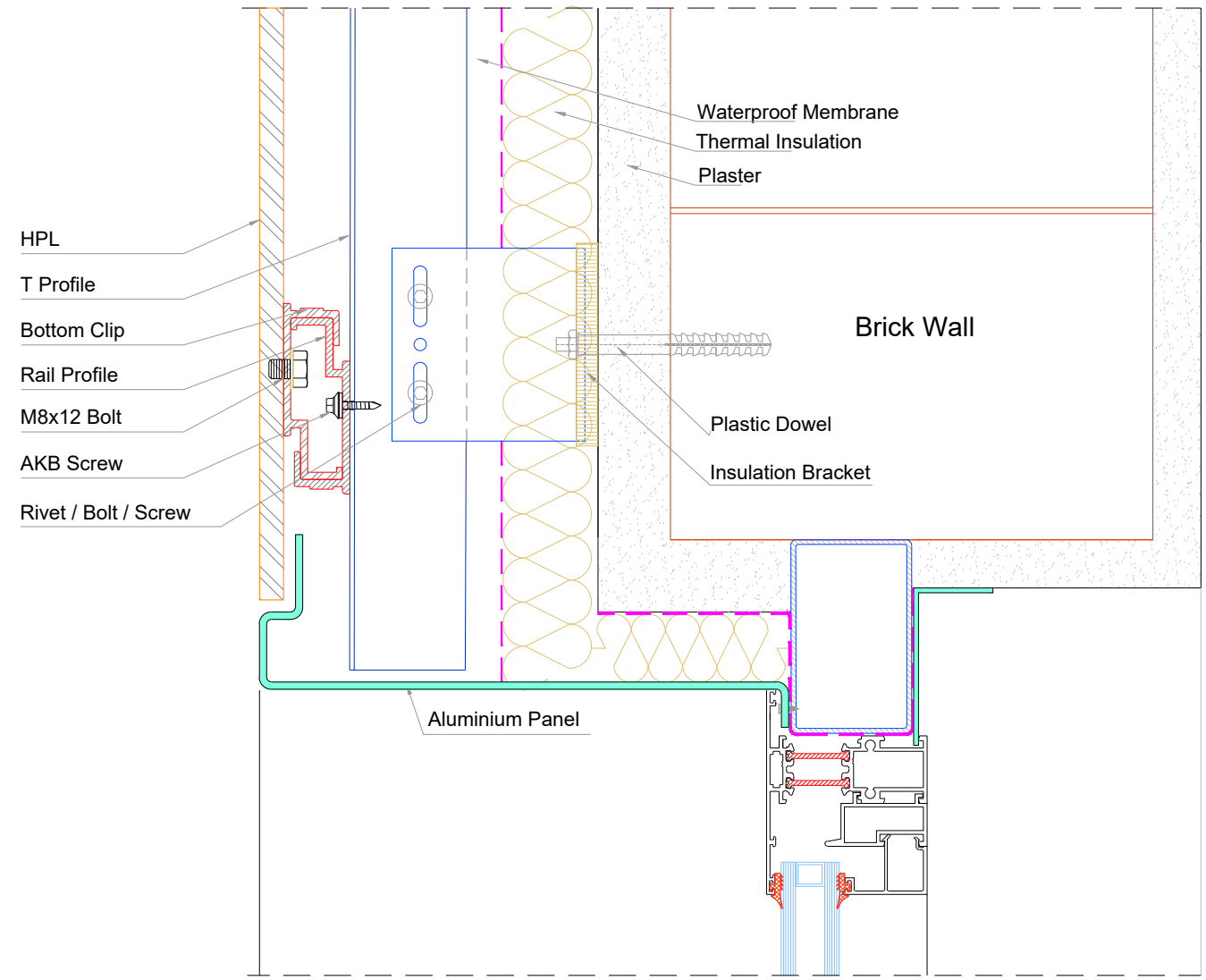


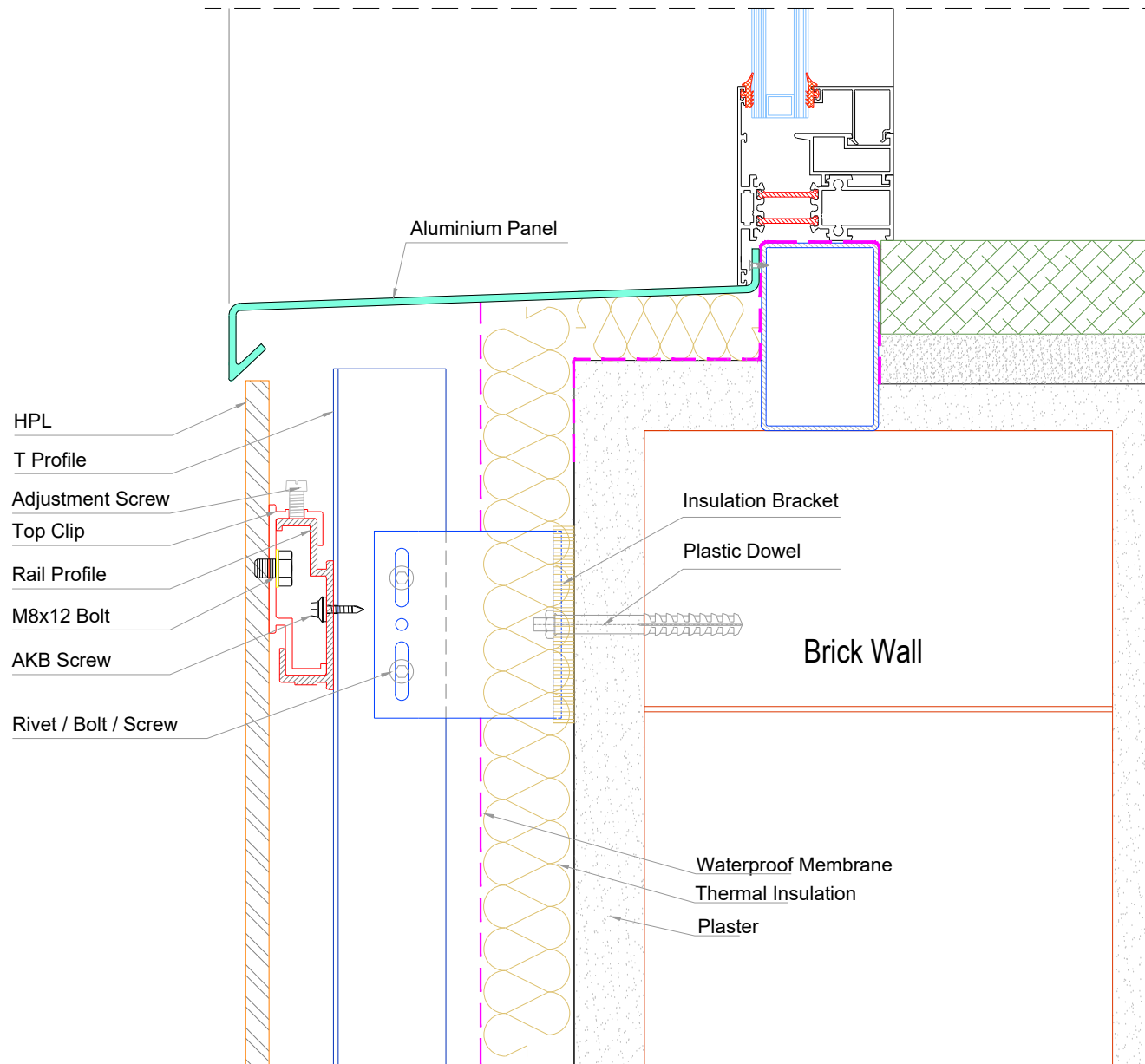


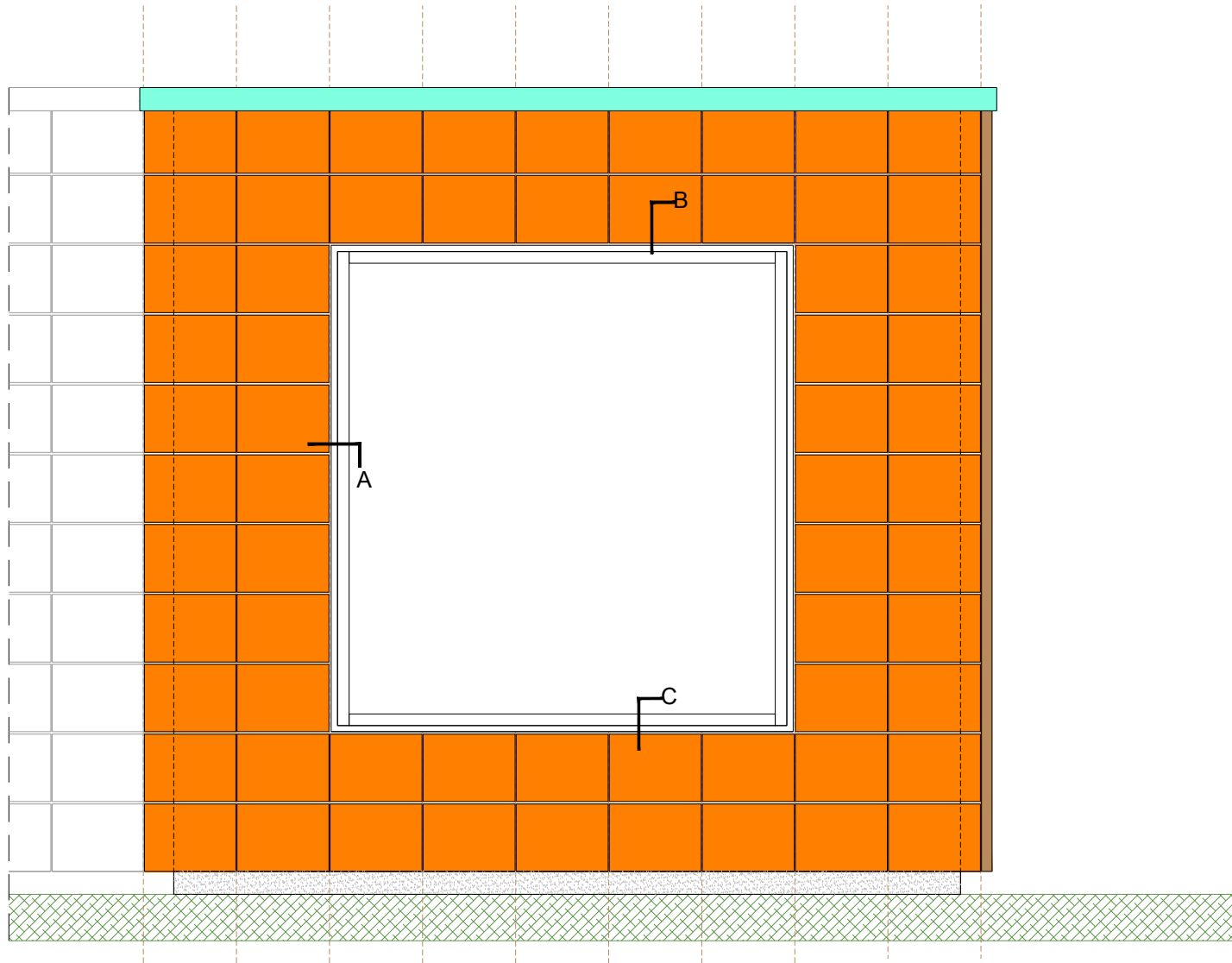


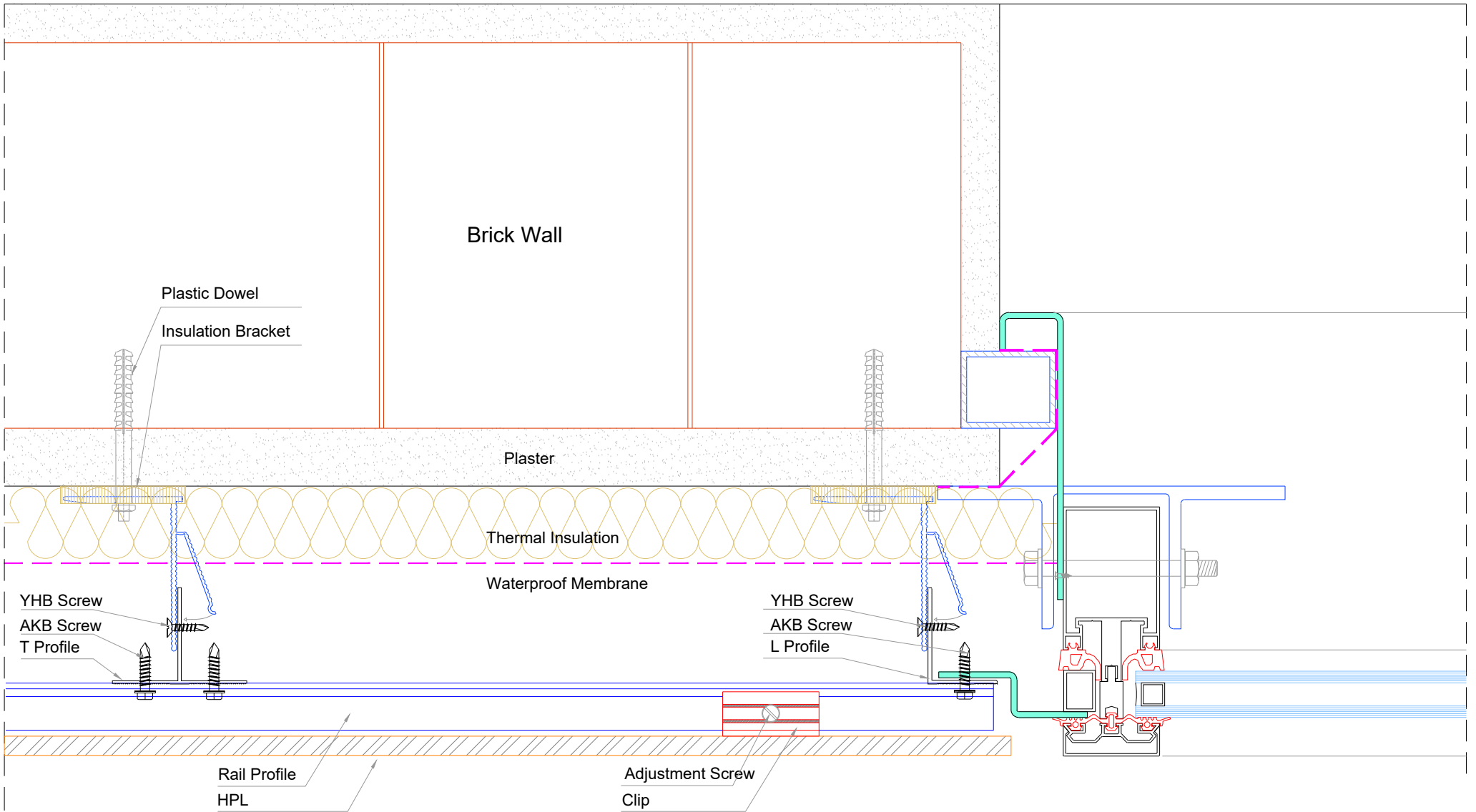


DETAIL 7



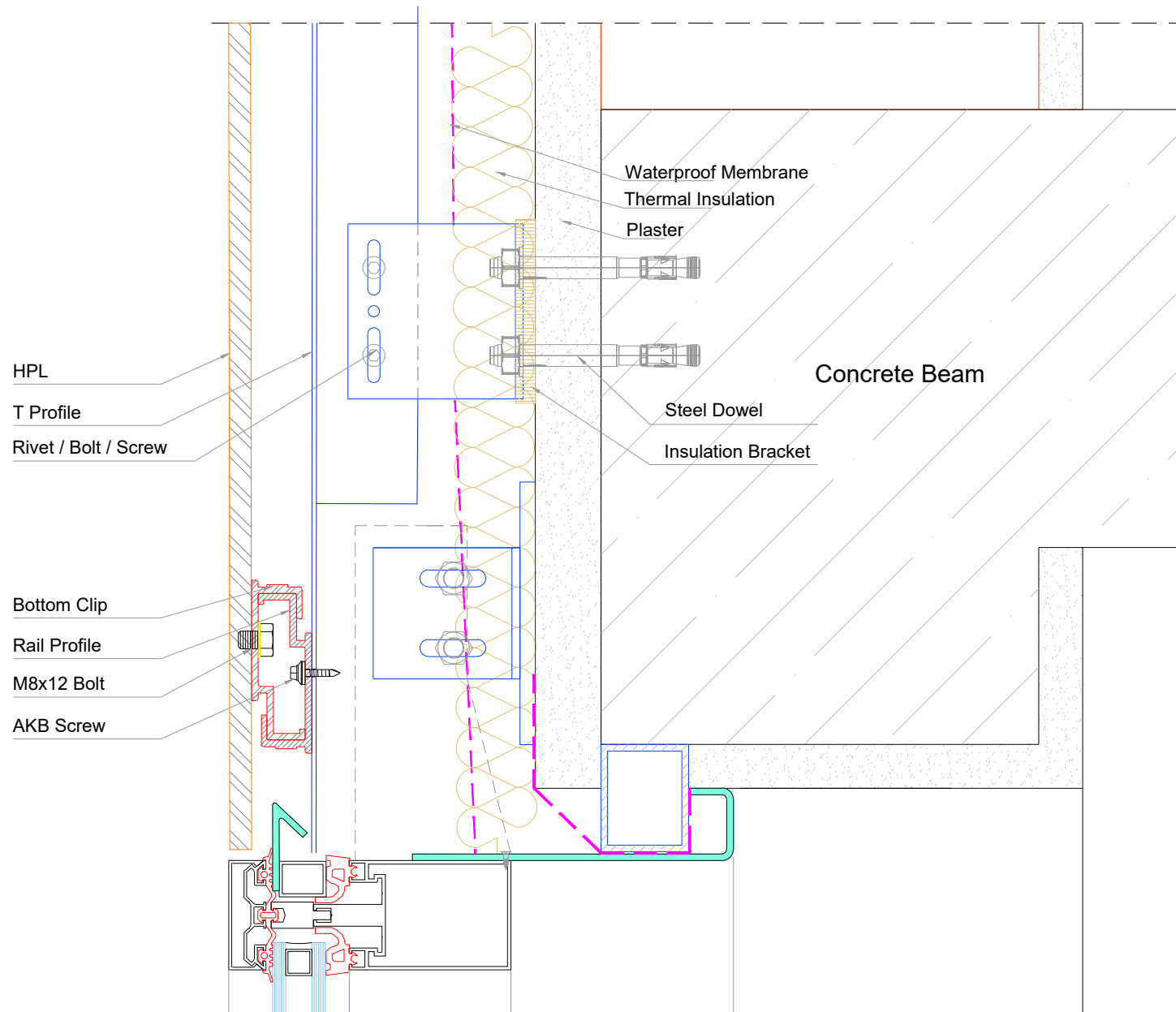




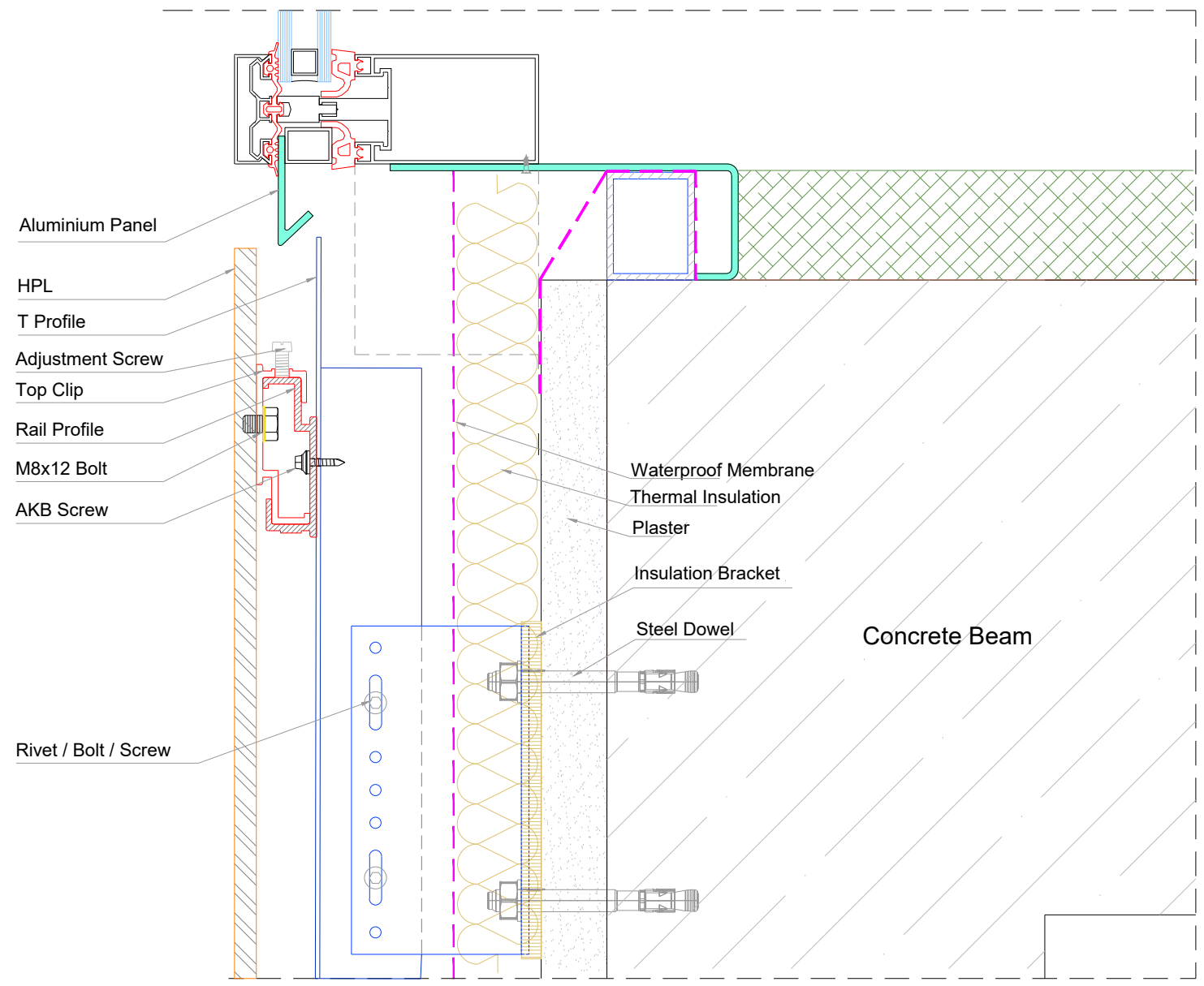


DETAIL A





DETAIL B



DETAIL C